



giving
nature
a home

Glasgow Wildlife Garden Festival

Bioblitz pack



Artwork by Josie Valley (josievalley.com)
The Royal Society for the Protection of Birds (RSPB) is a registered charity:
England and Wales no.207067, Scotland no. SC037654.

Bird Hunt!

How many birds can you find?



My tail is longer than my body

Long-Tailed Tit



I have a black and white head.

Great tit



I look a bit like a great tit but I am smaller with a blue head!

Blue Tit



I am a very small, quick bird with a black head and a white neck.

Coal Tit



I look a bit like a blackbird but my tail is shorter and I have more shiny colours in my feathers.

Starling



As a grown up boy I am black with a yellow beak, funnily enough though girls are brown!

Blackbird



I have a long tail and black and white feathers.

Magpie



A larger black bird that can be very clever!

Carrion Crow



I have a bright red face and yellow patches on my wing.

Gold finch



As a grown up boy I have a reddish/brown chest and a grey head.

Chaffinch



I am a little brown/ grey bird with a short broad

House Sparrow



I have a bright red chest and cheeks!

Bullfinch



A small brown and grey bird

Dunnock



A yellow and green bird usually in trees and hedges

Green finch



You will recognise me from my bright red

Robin



A larger and paler black spotted thrush

Mistle Thrush



Tiny brown bird with a light stripe over my eye and my tail held in the air.

Wren



These pigeons are the ones you see commonly in the city

Feral Pigeons



The largest Pigeon in the UK and makes a cooing sound

Woodpigeon



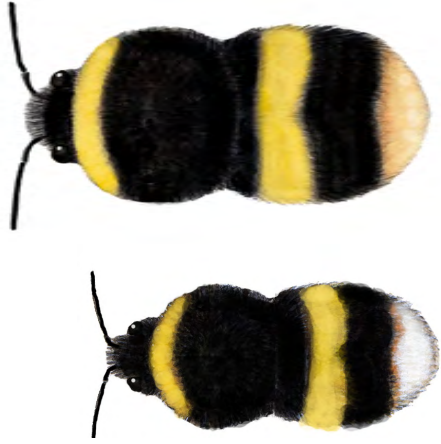
I am bigger than a herring gull and am commonly found in the city

Lesser Black Backed Gull

Buff-tailed bumblebee
Bombus terrestris



Has a dirty/golden yellow collar near the head and one on the abdomen. The queen's tail is an off white/buff colour which can sometimes appear orange. The workers have a white tail with a subtle buff line separating the tail from the rest of the abdomen. Males have black facial hair, as opposed to yellow, and a buff-tinged tail.



Worker/male

Queen

Queens and males have two strong yellow bands, but workers often only have one. The tail is dark orange-red, but fades over time. The Early bumblebee is particularly small. Males have a broad yellow collar and yellow hair on the face.



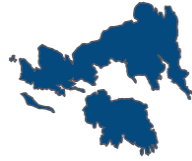
Male

Worker

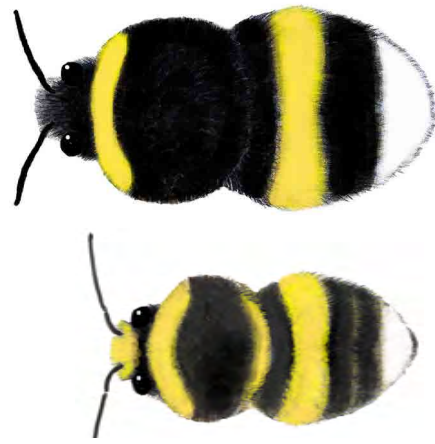
Queen

Early bumblebee
Bombus pratorum

White-tailed bumblebee
Bombus lucorum



Queens, workers and males have a yellow band on the thorax and on the abdomen. On a fresh specimen, the tail is a bright white and the yellow bands are a bright lemon-yellow colour. The males have yellow hair on their head, and extra tufts of yellow hair on the thorax and abdomen.



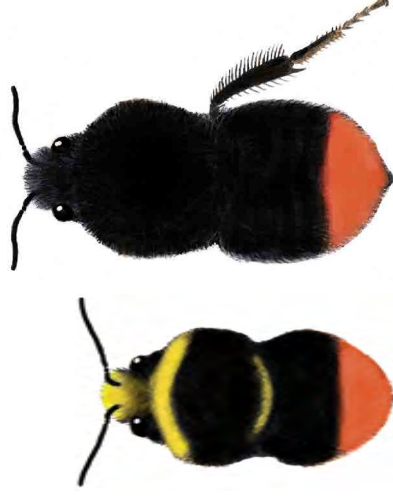
Male

Queen/worker

Red-tailed bumblebee
Bombus lapidarius



The queens and workers are completely black, except for an orange-red tail. The males look similar, but have some yellow hair on the face and thorax. Females are distinguished from the much rarer Red-shanked carder bee by having black hairs on the hind leg.



Male

Queen/worker

Use this chart to note how many of each species you see. Spend 15 minutes in a sunny spot. Then submit your sightings, date and location at Biological.Records@glasgowlife.org.uk.

IDENTIFICATION CHART Glasgow



Large White



Small White



Green-veined White



Cinnabar moth



Six-spot Burnet moth



Silver Y moth



Common Blue



Holly Blue



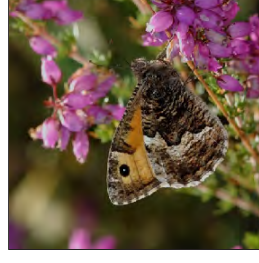
Small Copper



Ringlet



Meadow Brown



Grayling



Small Heath



Peacock



Small Tortoiseshell



Painted Lady



Red Admiral



Comma

REPTILE AND AMPHIBIAN RECORDING SHEET



You may be surprised at what reptiles and amphibians you can find in and around Glasgow! Tick off what species you see below during your walk and be sure to let us know about your sightings via our free Dragon Finder online app found at: <http://dfm.froglife.org/1261/794/>



DATE:..... LOCATION:.....

TIME:..... HABITAT TYPE:.....

REPTILES



COMMON LIZARD



SLOW-WORM



ADDER

AMPHIBIANS



COMMON FROG



COMMON TOAD



PALMATE NEWT

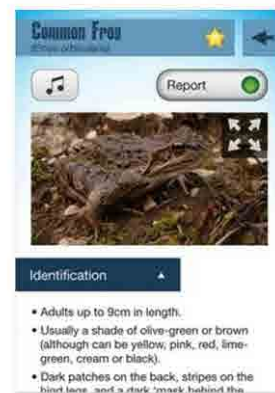


SMOOTH NEWT



GREAT-CRESTED NEWT

Not sure what species you've seen? Our online app can help you work that out too!

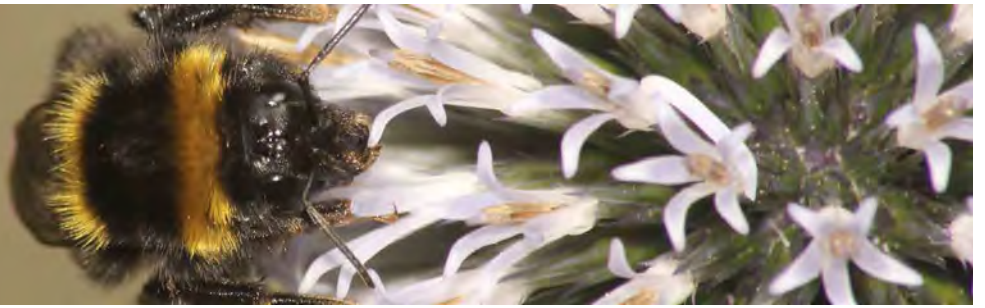


Froglife is a charity working to save frogs, toads, newts, snakes & lizards – Registered Charity No. SC041854





giving
nature
a home



Wildflowers



Birdsfoot Trefoil Flowers
Bright yellow with red streaks. Sometimes called 'Ham & Eggs'

Birdsfoot Trefoil Leaves
5 small Leaflets to 1 leaf. This is a great plant for day flying moths



Meadow Buttercup
Nice Yellow flower made of 5 yellow petals.
Leaves divided into lobes

Red clover
Vibrant pinkish red colour
Leaves in 3's



Red Campion
Pinkish red petals, usually 9 or 10
Leaves are hairy!

Meadow Cranesbill
Bluish lilac flowers
Leaves are deeply divided and jagged



Oxeye Daisy
Large Daisy Flower head - 3-5cm
Leaves are spoon shaped and lobed

Sneezewort
A member of the daisy family that like the damp. Leaves are long narrow and pointed



Yarrow
The small white flowers are great for hoverflies
The leaves are highly divided and feel hairy

Ragged Robin
Really ragged looking petals
Leaves are narrow and grass-like.



Tree

Identification Guide

This guide can be used for the OPAL Tree Health Survey and OPAL Air Survey



Oak

Quercus species



Ash

Fraxinus excelsior



Horse chestnut

Aesculus hippocastanum



Sycamore

Acer pseudoplatanus



Rowan

Sorbus aucuparia



Elder

Sambucus nigra



Maple

Acer species



Hawthorn

Crataegus montana



London Plane

Platanus x acerifolia



Sweet chestnut

Castanea sativa



Beech

Fagus sylvatica



Whitebeam

Sorbus aria



Cherry

Prunus species



Willow

Salix species



Hornbeam

Carpinus betulus



Crab apple

Malus sylvatica



Birch

Betula species



Poplar

Populus species



Hazel

Corylus avellana



Lime

Tilia species



Elm

Ulmus species



Alder

Alnus species



Record Number	What?	Where?	When?	Who?	Comments
Example	Name of species Found	Where found- (Please give grid reference or very detailed description)	When Found- (date and time)	Did you identify it or did someone else (Give names)	Please tell us any other observations
1					
2					
3					
4					
5					
6					
7					
8					
9					
10					

Name.....
 Organisation (if any)
 address.....
 Date.....

Please return records to:
Biological.Records@glasgowlife.org.uk
 Richard Sutcliffe
 Glasgow Museums Resource Centre
 200 Woodhead Road
 South Nitshill Industrial Estate
 Glasgow

Important: By submitting this form, I give permission for the RSPB and Glasgow Museums Biological Records Centre to hold personal information and wildlife records created by me. This data may be collated and disseminated manually or electronically, including the internet, for environmental decision making, education, research and other public benefit uses. My name may be passed to third parties with these records to identify me as the source of data in copies or extracts of the database carried out in accordance of the normal functions of Glasgow Museums Biological records centre. No other personal details will be disclosed without my prior permission. The information remains my property at all times. I reserve the right to withdraw this permission at any point in the future.

Working together to give Nature a home



The Royal Society for the Protection of Birds (RSPB) is a registered charity: England and Wales no. 207076, Scotland no. SC037654