

Land management training programme 2016

Excellent value expertise from the RSPB

Our 1-day courses are delivered by experienced advisors who draw on techniques developed across our reserve network, and help over 4,000 landowners manage their land for wildlife each year.



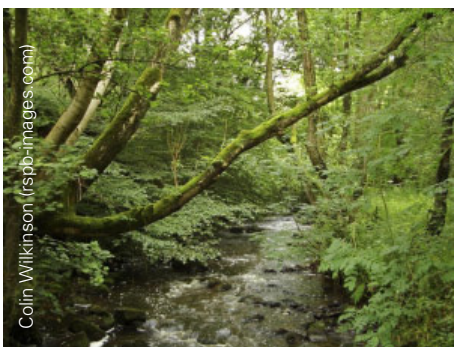
The course package includes:

- **Field visits and indoor sessions led by experienced advisors and land managers.**
- **Complementary information packs – and management handbook where applicable.**
- **Opportunities to share experience and network with other land managers.**
- **Each course costs just £80 +VAT and includes refreshments and a buffet lunch.**

Special offers*: Book two or more courses at the same time for a £10 discount.
RSPB members receive a £10 discount. *Only one offer per booking

Suitable for: land owners, advisors, land managers and others who are involved in habitat management.

Woodland

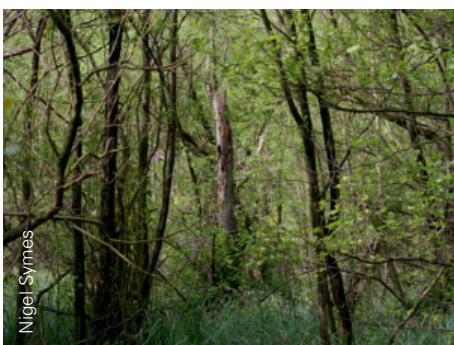


Woodland management for wildlife – an introduction

Date: 26 July

Location: Ticknall, South Derbyshire

This course will explore how woodland management for wildlife can be integrated with other woodland management objectives, including legal, practical and financial considerations. We will cover the ecology of declining woodland species and how targeted management can benefit these, illustrated by a site visit to Calke Abbey National Trust estate. Suitable for landowners and managers or others who wish to increase their knowledge of woodland wildlife.



Woodland management for wildlife – advanced

Date: 20 July

Location: Retford, Nottinghamshire

This course is suitable for woodland owners and managers, forestry practitioners and advisers. It covers the ecology of declining woodland species and how targeted management for wildlife can be integrated with other woodland management objectives. The course includes talks from Nottinghamshire Wildlife Trust and a workshop style discussion on relevant management issues and practical/financial considerations. A site visit to Treswell Wood Nottinghamshire illustrates possible approaches to integrating economic sustainability with conservation management.

Farming



Managing solar farms for wildlife

Date: 5 July

Location: RSPB Hope Farm, Knapwell, Cambridgeshire

This is an introduction to solar farm management for wildlife. We will cover the ecology of key species and the basic management options that can be used to benefit species using solar farms. We'll cover arable and pastoral options, and the relative merits of both approaches. There will be a theory session, interactive workshop to assess option practicality and delivery, and a farm walk to look at options on the ground.

Wetlands



An introduction to reedbeds

Date: 12 July

Location: RSPB Ham Wall, Somerset

An introduction to reedbeds and their management for wildlife, focusing on reedbed specialists. We will cover the ecology of key species and the basic reedbed vegetation types, hydrology and management techniques. As well as discussing management, we will also touch on restoration and creation of this habitat. There will be a site visit in the afternoon to look at the practical application of the theory covered in the morning.



Advanced reedbed management

Date: 13 July

Location: RSPB Ham Wall, Somerset

A follow on from the 'Introduction to reedbeds' course, this course will look in more detail at some of the advanced and radical management solutions available for old or degraded reedbeds, and the outcomes they can deliver. There will be a site visit in the afternoon to look specifically at the management of the oldest part of Ham Wall.

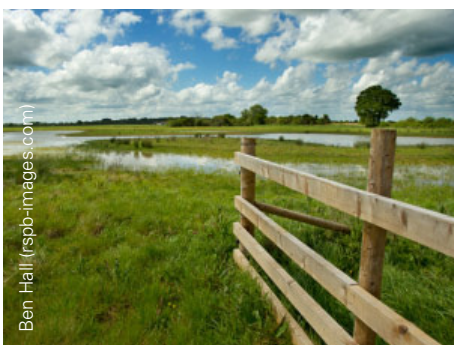


An introduction to wet grassland

Date: 16 November

Location: RSPB Otmoor, Oxfordshire

An introduction to lowland wet grassland and its management for wildlife, and in particular breeding waders. We will cover the ecology of key species and the basics of hydrological control, the effect of soil types, sward management and grazing regimes. The management, restoration and creation of this habitat will be discussed. There will be a site visit in the afternoon to see the practical application of the theory studied in the morning.



Advanced lowland wet grassland: managing wet grasslands into the future

Date: 17 November

Location: RSPB Otmoor, Oxfordshire

This is a follow on from the 'Introduction to wet grassland' course. We will be looking at the more advanced wet grassland management techniques, climate change adaptation, and managing sites with problem species. There will be a site visit in the afternoon to look at the practical application of the theory covered in the morning.

Can't find the course you're looking for?

Bespoke courses

We have worked with a number of organisations to develop bespoke courses to meet their needs. A cost-effective way of delivering training, they can be held on your own site, covering the species and habitats that are important to you.

Habitats we can cover include: heathland, arable habitats, pastoral habitats, woodlands, scrub, wetlands, uplands, the urban environment and minerals sites restoration. Examples of previous courses we have run include Managing Parks for Biodiversity and Arable Farming for Wildlife.

If you'd like to discuss tailor-made courses for your team, please call us on **01767 693308** or e-mail: **conservation-advice@rspb.org.uk**.

